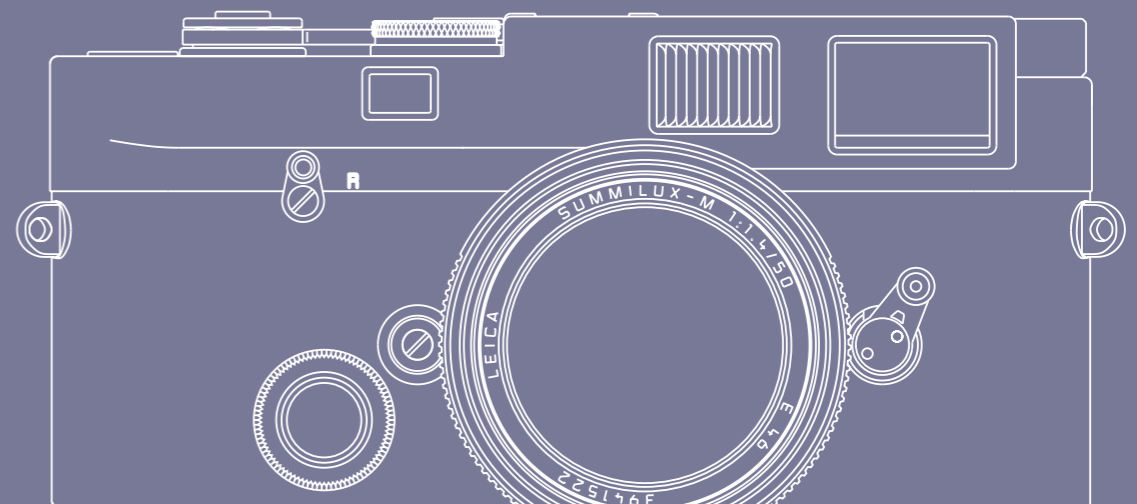


The photographer's tool





**Mechanical perfection. Nothing else.** The LEICA MP is a tool. Made by hand, created for the photographer's craft. Tailored to the decisive photographic parameters. In compact form, with clean design, clearly laid out. Unobtrusive, quiet, reliable. Concentrated technology for concentrated photography, without distraction by automation. For pictures that only a photographer can see, compose and record. Modern, because it captures the present. Current, because all its features have been optimized. Traditional, because it builds on the accumulated experiences of the pioneer in 35 mm camera construction. Not a photographic whim, but a camera for life.





— **Professional**

With the name MP, the new Leica rangefinder camera joins the line of reporter cameras that have been tailored specifically to the wishes of professional photographers. It is the purely mechanical alternative to the LEICA M7, whose electronically controlled shutter and aperture-priority automatic exposure control offer more convenience and functions. The LEICA MP is dependent upon the skill of the photographer, but independent of, for instance, batteries. The latter are only needed for exposure metering. Those who set shutter speeds and apertures themselves can dispense with the electronics altogether.



— All control elements are made completely of metal. The pull-up rewind knob is especially handy and impact-resistant. And because many pros love the red Leica dot, but discreetly cover it up on their cameras, we have dispensed with this round logo right from the start. We believe that it is sufficient that knowledgeable photographers and owners readily identify the Leica as such. The delicate Leica script on the top cover is an adequate reminder.



— **Individual**

The LEICA MP is available in two different surface finishes : in silver chrome finish and in black lacquer finish. And when, after prolonged intensive use, the black lacquer wears down to the bare brass on some edges and corners, the photographer will know that he or she has shared many memorable experiences with that camera.



— The LEICA MP with the silver chrome finish is available with the three viewfinder magnifications of 0.58 x, 0.72 x, and 0.85 x. It is tailored ideally to the preferences and needs of the photographer : The 0.58 x magnification for a great overview with wide-angle lenses and for eyeglass wearers. 0.72 x as a universal standard (also featured on the black lacquer version). 0.85 x for accurate focusing with medium focal length lenses and with Leica M tele lenses. The new body covering with its very good grip is common to all versions.



— **Fast**

Photography means writing with light. Photography with a Leica M also means being able to create dramatic images even in low available light situations. Lenses that deliver rich contrast and full performance at full aperture, focusing with pinpoint accuracy with the Leica rangefinder and the vibration-free release of the cloth focal plane shutter are the basis for that capability.



— Difficult light situations can be mastered accurately with the LEICA MP, because the camera does not attempt to think on behalf of the photographer. Instead, its selective exposure metering provides the photographer with accurate, unequivocal data on which he can base his decisions. The LEICA MP goes a step further with a newly improved viewfinder: A new type of mirror and an additional lens element present a measuring field rich in contrast and clearly delineated bright-line frames for the various focal lengths, even with particularly critical lateral light.



— **Enduring**

The LEICA MP has been designed for longevity and value retention. To that end, we only use selected materials and sophisticated fabrication processes. Before it was ready to be marketed, the LEICA MP was subjected to numerous and exhaustive field- and laboratory tests to prove its solidity. In extremely cold temperatures, in which no battery-dependent camera would function any longer. With shutter release cycles in numbers that hardly any other camera can sustain. Therefore Leica is offering an unusually long warranty period of 5 years for registered owners, who acquired their LEICA MP at an authorized dealer.



— From today's point of view we cannot imagine that the LEICA MP can ever be improved. Nevertheless we do guarantee that all services and spare parts will be available at Leica customer service departments for at least thirty years after a possible model change.

## Accelerators : LEICAVIT-M and Rewinding Crank

In combination with the manual rapid film advance LEICAVIT-M and the attachable rewinding crank, the LEICA MP forms a particularly harmonious unit.

The **rewinding crank** is an accessory for fast and convenient rewinding. It is available in black lacquer and in silver chrome and it can be attached to the rewinding knob by means of a small screw. A small screwdriver is supplied with this useful accessory.

silver chrome version **Order No. 14 437**  
black lacquer version **Order No. 14 438**



Independent of batteries, the new **LEICAVIT-M** is a compact, manual rapid film advance accessory that is attached to the camera in place of its baseplate, forming a particularly ergonomic unit. The LEICAVIT-M is available in black lacquer and in silver chrome and it can also be used on all versions of the LEICA M7, M6 TTL, M6, M4-P and M4-2. The film advance takes place smoothly and quietly, without having to remove the camera from eyelevel, by drawing the fold-out trigger. The film can also be advanced in steps. The shutter is still released by means of the release button on the camera. The film advance lever of the camera can also be used.

silver chrome version **Order No. 14 008**  
black lacquer version **Order No. 14 009**

Michel Comte – born 1954 in Zurich – has made his early passion photography to his profession. With his portrait and fashion pictures in Italian Vogue and Vanity Fair he became one of the most sought after photographers. He worked for years with the International Committee of the Red Cross and other organizations and became an unrelentless chronicler in the areas of need in this world. His kind of photography means getting close, he never uses telephoto lenses. His tools are the discrete Leica M Rangefinder Cameras.







# Technical Data



Camera	LEICA MP	0.72 silver	0.72 black	0.58 silver	0.85 silver
<b>Camera Order No.</b>		10 301	10 302	10 303	10 305
<b>Camera type</b>	Compact 35 mm rangefinder system camera with mechanically controlled shutter.				
<b>Lenses</b>	<b>Lens mount</b> Leica M bayonet. <b>Lens system</b> Leica M lenses with focal lengths from 21 to 135 mm.				
<b>Viewfinder</b>	<p><b>Viewfinder principle</b> Large, bright-line viewfinder with automatic parallax compensation. Viewfinder optics improved for reduced susceptibility to stray light and enhanced visibility of all bright-line frames. <b>Eyepiece</b> Set for -0.5 dpt. Corrective lenses from -3 to +3 dpt available. <b>Framing</b> Projection of pairs of bright-line frames : For 28 and 90 mm (90 mm frame only in LEICA MP 0.85) or for 35 and 135 mm (35 mm frame only in LEICA MP 0.58) or for 50 and 75 mm. Automatic projection with the lens fitted. The desired frame can be projected using the frame preselector. <b>Parallax compensation</b> Automatic compensation of horizontal and vertical viewfinder/lens parallax according to the focusing setting, i. e. the viewfinder bright-line frame aligns automatically with the subject taken with the lens. <b>Magnification</b> (for all lenses) LEICA MP 0.58 : 0.58 x, LEICA MP 0.72 : 0.72 x, LEICA MP 0.85 : 0.85 x. <b>Wide-base rangefinder</b> Bright split-image and double-image rangefinder area in center of viewfinder image. <b>Effective base value</b> LEICA MP 0.58 : 40.2 mm (mechanical base value 69.25 mm x viewfinder magnification 0.58 x), LEICA MP 0.72 : 49.9 mm (mechanical base value 69.25 mm x viewfinder magnification 0.72 x), LEICA MP 0.85 : 58.9 mm (mechanical base value 69.25 mm x viewfinder magnification 0.85 x).</p>				
<b>Exposure metering</b>	Exposure metering through the lens (TTL), selectively with working aperture. <b>Metering principle</b> The light reflected from a measuring field in the center of the first shutter curtain is measured. The measuring field has a diameter of 12 mm and is therefore equal to approx. 13% of the total negative format or in the viewfinder approx. 1/2 of the short side of the valid viewfinder frame. <b>Measuring range</b> (at ISO 100/21°) From 0.03 cd/m <sup>2</sup> to 125,000 cd/m <sup>2</sup> at room temperature, normal humidity and aperture 1.0. For ISO 100/21° this corresponds to EV -2 to EV 20 or f/1.0 and 4 s ("B" setting) to f/32 and 1/1000 s. Flashing of the left-hand triangular LED in the viewfinder indicates working in conditions of low light. <b>Film speed setting range</b> Manual setting from ISO 6/9° to ISO 6400/39°. <b>Exposure mode</b> Manual setting of shutter speed and aperture, compensation using LED light balance.				
<b>Flash exposure control</b>	<b>Flash unit socket</b> Accessory shoe with central contact or standard flash connection socket. <b>Synchronisation</b> With the first shutter curtain. <b>Flash synchronising speed</b> 1/50 s ; slower shutter speeds can be used. <b>Flash exposure metering</b> Through flash units' own automatic exposure control or guide number calculation and manual setting of diaphragm.				
<b>Displays in the viewfinder (lower edge)</b>	LED symbol for battery status. LED light balance with two triangular and one central circular LED for manual exposure setting. Triangular LEDs show the required direction of rotation for compensation with the aperture setting ring.				
<b>Shutter and shutter release</b>	<b>Shutter</b> Rubberised-cloth horizontal-run focal plane shutter ; extremely low-noise operation, mechanically controlled. <b>Shutter speeds</b> From 1 s to 1/1000 s in whole steps, "B" for long exposures of any duration, 1/50 s for flash synchronisation. <b>Shutter release</b> Two-positions : Power (exposure meter on) – Release. Integrated standard thread for cable release.				
<b>Film transport</b>	<b>Loading</b> Manual loading after opening the base plate and folding out the rear of the camera. <b>Advancing</b> Manually with quick wind lever or LEICAVIT M, or motorised using LEICA MOTOR-M, LEICA WINDER-M, LEICA WINDER M4-P or LEICA WINDER M4-2 (from serial no. 10 350). <b>Rewinding</b> Manually with retractable rewind knob after turning the lever on the front of the camera to "R". Attachable rewind crank available as accessory. <b>Frame counter</b> On the top of the camera. Resets automatically on removal of base plate.				
<b>Camera body</b>	<b>Material</b> Enclosed all-metal body with foldable rear panel. Brass top plate and base plate, both chromium plated in silver or in black lacquer finish. <b>Tripod thread</b> A 1/4 (1/4") DIN in base plate.				
<b>Power supply</b>	(only necessary for metering and display) 3 V through 2 silver oxide button cells, type "PX 76/SR 44" or 1 lithium cell, type "DL 1/3 N". Battery check shown by flashing of the battery-shaped LED together with the light balance LEDs (state 1), extinguishing of the light balance LEDs (state 2), or extinguishing of all LEDs.				
<b>Dimensions (W x H x D)</b>	138 mm x 77 mm x 38 mm				
<b>Weight</b>	approx. 600 g (with battery, without camera cap)				
<b>Scope of delivery</b>	Neck strap with non-slip shoulder pad (14 312), camera cap with M-bayonet (14 195), flash socket cap (14 348), and battery.				

“The new LEICA MP has become part of me. An extension of my eyes. It’s simply the best instrument to make my dreams visible.” Michel Comte

**Optical performance** At Leica, each lens, every single one of them, is a masterpiece. Every lens element is painstakingly ground, polished and precisely centered. The result : handy, compact precision optics that are always based on photographic practice. And they are extraordinarily long-lived as well : All current Leica M lenses are compatible with all M cameras of the past. The consistently applied principle of system compatibility also enables historical lenses to be used on modern Leicas. Every lens has a precisely matched lens hood and is supplied in a soft leather case.

Aspherical lens elements (ASPH.) are used by Leica for further enhancement of the imaging performance. They have a surface that deviates from the spherical shape and they are very complex to produce, but they produce the very best results with a compact design.

Apochromatic correction (APO) is used by Leica on telephoto lenses in order to combine the color spectrum coming from a point on the subject practically into a point on the image. This assures the highest sharpness across the entire image, even at full aperture.



**Wide-Angle Focal Lengths**

**LEICA ELMARIT-M ASPH. 21 mm f/2.8**

Uniform sharpness and minimal distortion across the entire image area at full aperture. Ideal for dramatic effects with a monumental foreground, strongly receding background and a wide horizon. Also available in silver chrome finish.

**LEICA ELMARIT-M ASPH. 24 mm f/2.8**

Ideal for dynamic photographs that show the subject in its environment. Extraordinarily high contrast, already at full aperture. High brilliance and dimensional effect, even in the close-up range. Also available in silver chrome finish.

**LEICA SUMMICRON-M ASPH. 28 mm f/2**

Very fast wide-angle lens. Recommended for available light photography and reportage. Uncompromised image quality, even at full aperture.

**LEICA ELMARIT-M ASPH. 28 mm f/2.8**

Because of its impressive rendering of fine details and contrasts, this lens is used preferentially for reportage as well as landscape- and architectural photography.

**LEICA SUMMILUX-M ASPH. 35 mm f/1.4**

An extremely compact and fast wide-angle lens, rich in contrast, with a unique imaging performance among compact 35 mm lenses, already at full aperture. Also available in silver chrome finish.

**LEICA ELMARIT-M ASPH. 35 mm f/2**

Thanks to its high sharpness, extraordinary contrast and outstanding resolving power across its entire focusing range, this versatile all-around lens is one of the world's best high-speed wide-angle lenses. Also available in silver chrome finish.



#### Medium Focal Length

##### LEICA NOCTILUX-M 50 mm f/1

The extremely high speed of this lens makes good photographs possible even in low light situations. With the very shallow depth of field at f/1, it is possible to separate details clearly from their backgrounds, as in portraits, for instance. The Noctilux is practically free of flare, even at full aperture, and it renders fine structures distinctly.

##### LEICA SUMMILUX-M 50 mm f/1.4

A very fast lens with an optical computation that is tailored to reportage in poor light conditions. Its insensitivity to flare leads to clear images when strong light sources are included in the picture. The low depth of field makes it possible to concentrate on the essential part of the subject. Also available in silver chrome finish.

##### LEICA SUMMICRON-M 50 mm f/2

This handy universal lens is certainly one of the very best among fast lenses with standard focal lengths. Its imaging quality is outstanding, even when focused at the nearest distances. Also available in silver chrome finish.

##### LEICA ELMAR-M 50 mm f/2.8

This is the universal lens of choice when small size and low weight are more important than the largest aperture. It is very compact, handy, and equipped with outstanding optics. Also available in silver chrome finish.

#### Variable Focal Length

##### LEICA TRI-ELMAR-M ASPH 28-35-50 mm f/4

The Tri-Elmar-M with its two aspherical lens elements combines the best optical performance with the ability to very quickly select one of three typical M focal lengths. Its precise mechanism assures focus retention during such changes. Light and compact, the Tri-Elmar-M is an ideal travel companion.



#### Telephoto Focal Lengths

##### LEICA SUMMILUX-M 75 mm f/1.4

A high speed for this focal length virtually predestines this lens for available light photography in portraiture, reportage and for subjects with the great light contrasts of concerts or theatre performances.

##### LEICA APO-SUMMICRON-M ASPH. 90 mm f/2

This lens has practically no competition in its class. Its high speed permits relatively short exposure times that prevent blurs due to camera shake, for instance in snapshots taken at a distance. Also available in silver chrome finish.

##### LEICA ELMARIT-M 90 mm f/2.8

Very good contrast and sharpness, even at full aperture, make this compact lens that only weighs approximately 400 g (14 oz) an ideal companion on the road. Also available in silver chrome finish.

##### LEICA APO-TELYT-M 135 mm f/3.4

Impressive in every way, this telephoto lens with Leica APO quality has perfect resolving power, contrast and sharpness at every aperture. Its handiness, low weight and ease of use are additional plus points.

# Accessories

Accessories that are tailored specifically to Leica M cameras make photography even more pleasurable.



**Flash LEICA SF20**, with diffuser screen for 24–28 mm wide-angle lenses, velvet pouch.  
**Connection** TTL flash exposure metering with LEICA M7 and M6 TTL ; automatic mode with all Leica R- and M-models with center contact in the accessory shoe (hot shoe) ; can be used on cameras without a hot shoe by means of commercially available flash adapter cables or hot shoes.  
**Guide number** 20 (metric). **Functions** Exposure can be varied by  $\pm 3$  f-stops ; angle of coverage sufficient for 35 mm wide-angle lenses ; with a diffuser, coverage is adequate for 24 mm and 28 mm wide-angle lenses. Three automatic apertures in the 'A' mode : f/2.8, f/5.6 and f/11 (takes the film speed into account). Flash unit switches off automatically when not in use for more than 3 minutes.  
**Displays** All settings and corrections are shown in an illuminated LCD display. Flash confirmation in the viewfinder of the LEICA M7 and LEICA M6 TTL. **Film speed** in the TTL mode from ISO 12/12° to ISO 3200/36° ; in the 'A' and 'M' modes from ISO 25/15° to ISO 800/30°. **Power supply** Two 3 V lithium batteries Type 123 A, allow rapid exposure sequences. **Dimensions** (W x H x D) 109 x 66 x 40 mm (4 3/16 x 2 5/8 x 1 5/16 in). **Weight** approx. 180 g (6.3 oz) **Order No. 14 414**



**LEICA MOTOR M** Extremely compact and handy battery-powered motor drive. The LEICA MOTOR M is attached to the camera in place of the baseplate and it couples to the camera mechanically.  
**Exposure frequency** Choice of 1.5 or 3 frames per second. **Motor and gear train** Especially designed direct current motor with a particularly quiet friction drive, the sound is reduced even further at the 1.5 fps exposure frequency. **Power supply** Two 3 V lithium batteries Type 123 A, housed in the ergonomically designed grip. **Capacity** According to Leica testing specifications, at least 100 36-exposure films at 20 °C (68 °F). **Housing** High-grade fiberglass-reinforced molded material, brass (next to the camera), aluminum battery housing, steel chassis. **Tripod socket** A 1/4 (1/4"), centered under the optical axis of the lens. **Dimensions** (W x H x D) 138 x 78 mm (5 3/8 x 3 1/8 in) with the handgrip 18.5 mm (3/4 in) to the bottom edge of the camera x 56 mm (2 1/8 in). **Weight** without batteries : approx. 225 g/less than 8 oz.  
**Order No. 14 408** (Not for use with lenses with viewfinder attachment)



**Ever ready case M with standard front**, for Leica M cameras without LEICAMETER, Motor M or Winder-M. Holds a Leica M camera with one of the following lenses : 21 mm f/2.8, 24 mm f/2.8, 28 mm f/2, 28 mm f/2.8, 35 mm f/1.4, 35 mm f/2, 50 mm f/1.4, 50 mm f/2, 50 mm f/2.8  
Black nappa leather.

**Order No. 14 870**

**Eveready Case M** with a large front also accepts Leica M cameras with one of the following lenses : 50 mm f/1, 28–35–50 mm f/4.

**Order No. 14 871**



**Eveready Case MP** accepts a LEICA MP camera with a rewind crank and a LEICAVIT-M, as well as any Leica M equipped with a LEICAVIT-M. Robust saddle leather.

**Order No. 14 856**



**Carrying strap, Neoprene.**  
**Bestell-Nr. 14 162**

**Tabletop tripod** with three folding legs, A 1/4 (1/4") DIN 4503 tripod thread.

**Order No. 14 100**



**Large ball-and-socket head** with A 1/4 (1/4") DIN 4503 tripod thread.

**Order No. 14 110**

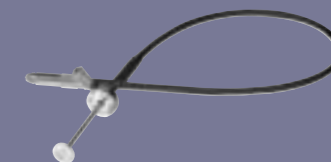


**Cable release, 25 cm (10") long**, with set screw.

**Order No. 14 067**

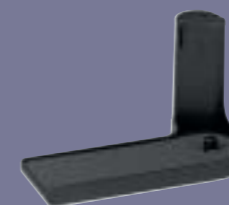
**Cable release, 50 cm (20") long**, with set screw.

**Order No. 14 076**



**Handgrip M** for secure and comfortable holding of any Leica M camera ; centered tripod socket.

**Order No. 14 405**



**Lens carrier M**, attaches to the camera's baseplate ; holds an extra lens, creating a compact photographic outfit with two lenses.

**Order No. 14 404**



**VIEWFINDER MAGNIFIER M 1.25x** Makes picture composition considerably easier when using focal lengths above 50 mm. Particularly with the Leica M-system 75 to 135 mm telephoto lenses, the clearly larger visible viewfinder image offers significantly better recognition of subject details within the relevant image field frame.

**Order No. 12 004**



**VIEWFINDER for 21/24/28 mm lenses** This viewfinder can be used on all Leica M models and, with its adjustable optical system, shows the framing for focal lengths of 21 mm, 24 mm, or 28 mm. For viewing without eyeglasses, the M correction lenses can be screwed into the viewfinder's eyepiece.

black chrome finish **Order No. 12 013**

silver chrome finish **Order No. 12 014**



**Correction lenses M**

+0.5 **Order No. 14 350**, +1.0 **Order No. 14 351**, +1.5 **Order No. 14 352**, +2.0 **Order No. 14 353**, +3.0 **Order No. 14 354**, -0.5 **Order No. 14 355**, -1.0 **Order No. 14 356**, -1.5 **Order No. 14 357**, -2.0 **Order No. 14 358**, -3.0 **Order No. 14 359**



[www.leica-camera.com](http://www.leica-camera.com)

For the other lines of Leica products too, man and his perception are the main consideration : Accordingly, high-grade Leica cameras and projectors provide a very special visual experience. Numerous cultural activities, photographic competitions and seminars as well as a competent technical customer service round out our program. More detailed information is available on the internet or from your authorized dealer.



Leica R-System



Leica M-System



Leica Compact Cameras



Leica Projectors



Leica Sport Optics



Trademark of the Leica Camera Group  
"Leica" and product names = ® Registered trademarks  
© 2003 Leica Camera AG  
All rights to change construction, design and range reserved  
Concept and Design : Heine/Lenz/Zizka, Frankfurt am Main  
Image indication :  
Product photography : Tom Vack  
Author's photography : Michel Comte  
Cover photography : Michael Agel  
Brochure order number : German 91065, English 91066,  
French 91067